



# Beademing VS Hemodynamiek

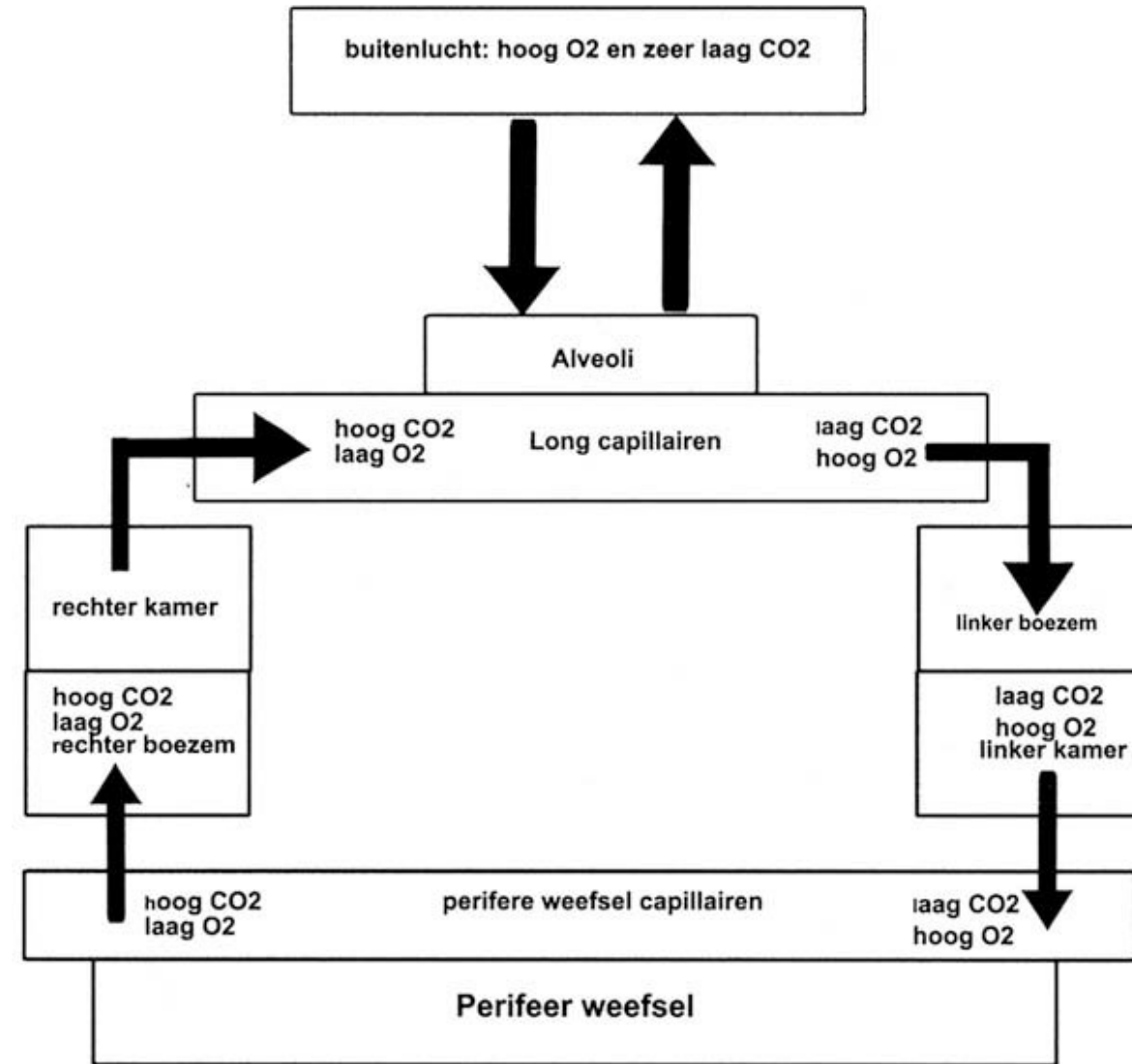
Hannah Brouwers  
Máxima MC Veldhoven

# Inhoud

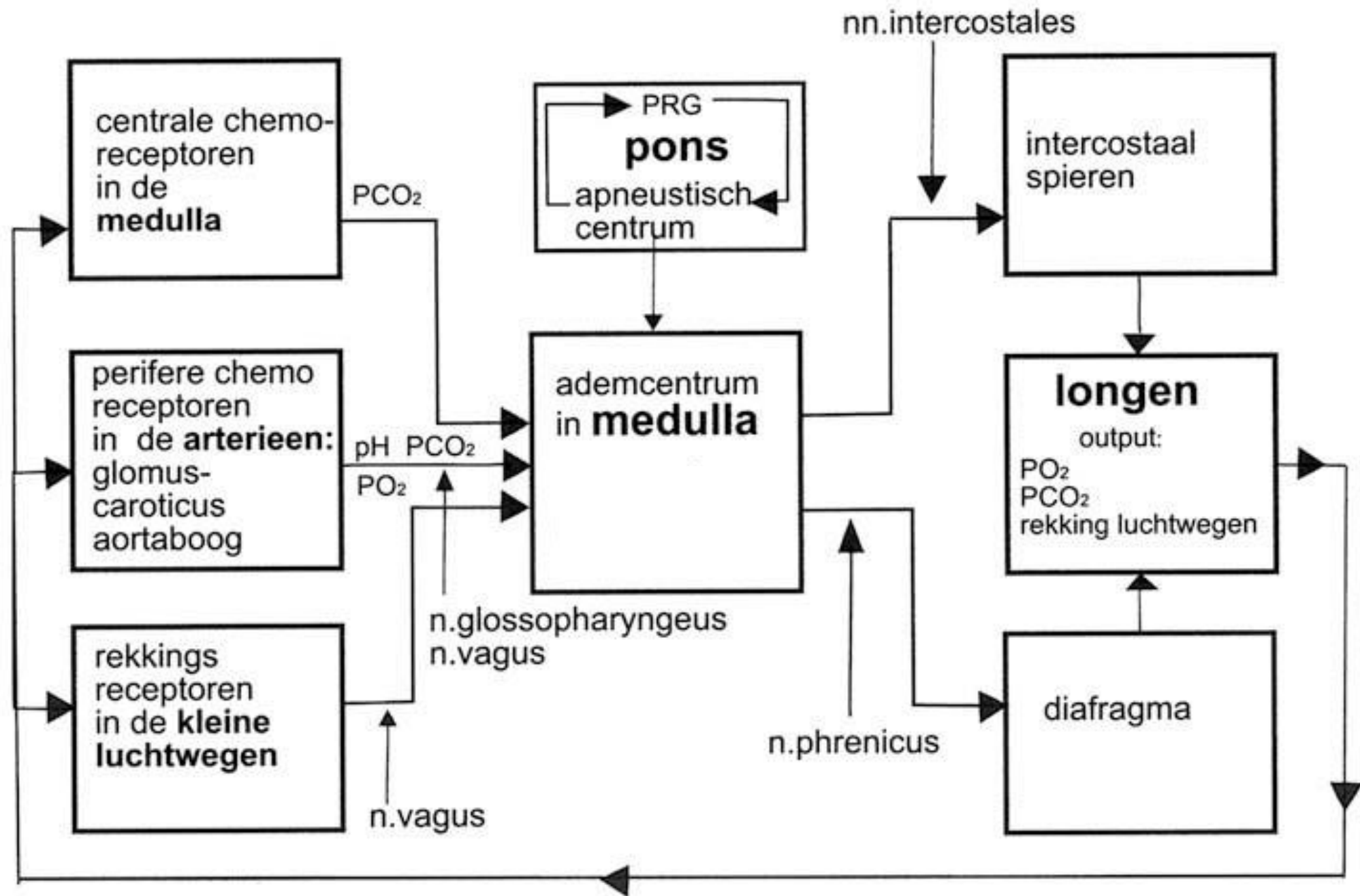
- Pathofysiologie
- Hart
- Hartfalen
- Buikligging
- Reanimatie

# • Pathofysiologie •

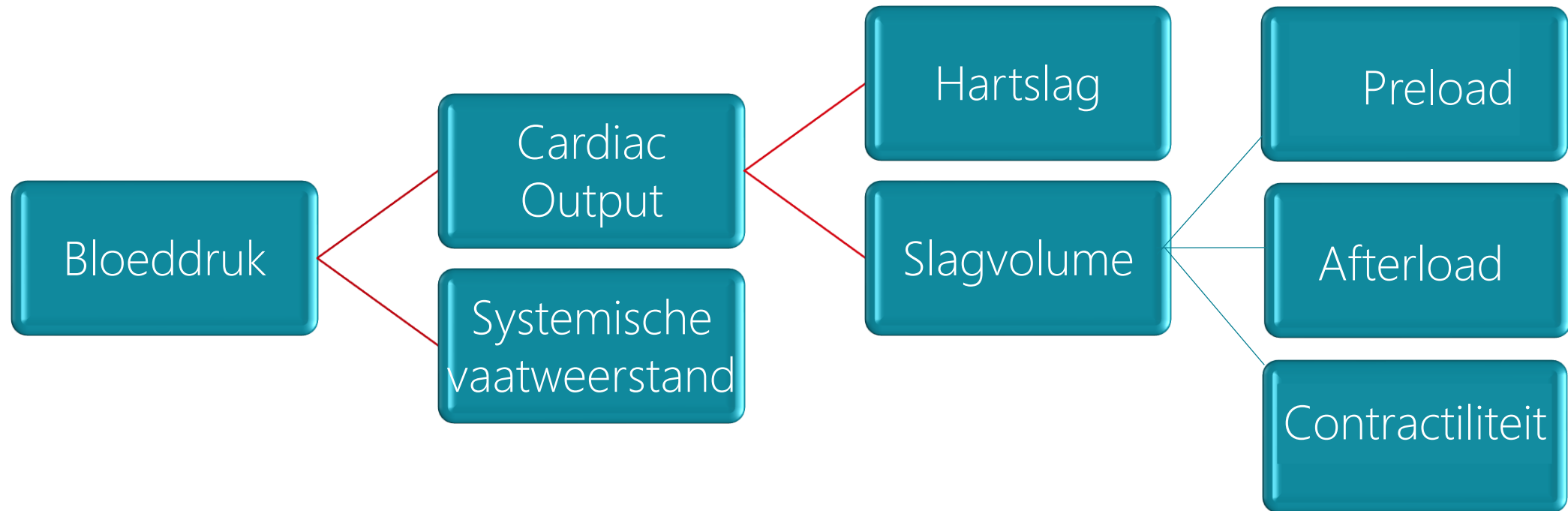
- Ventilatie
- Diffusie
- Perfusie



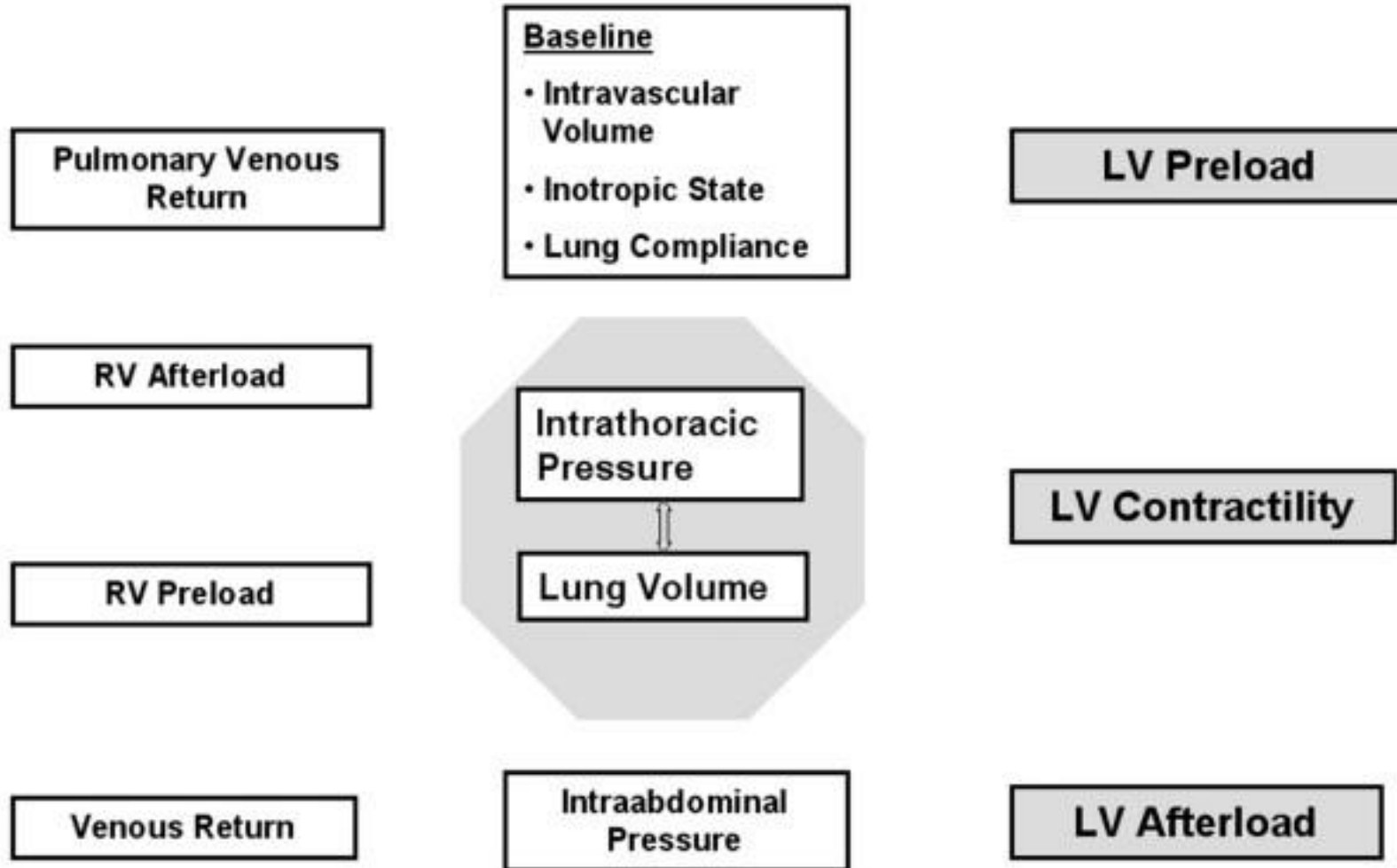
**"C3, 4, 5 Keeps the Diaphragm Alive."**



# Begrippen

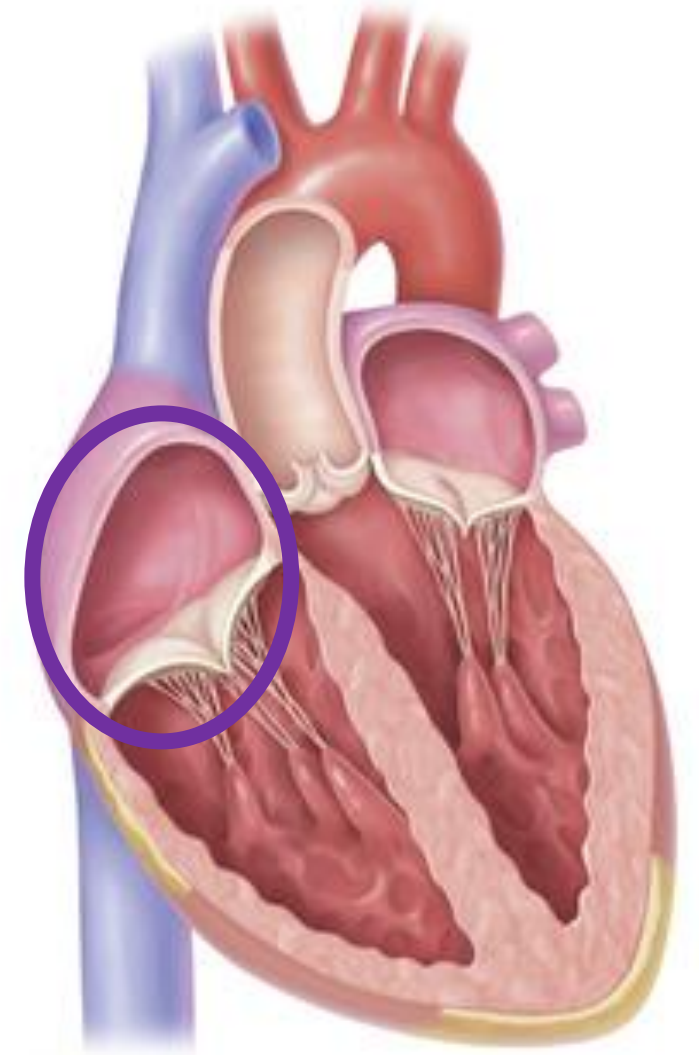


# Hart



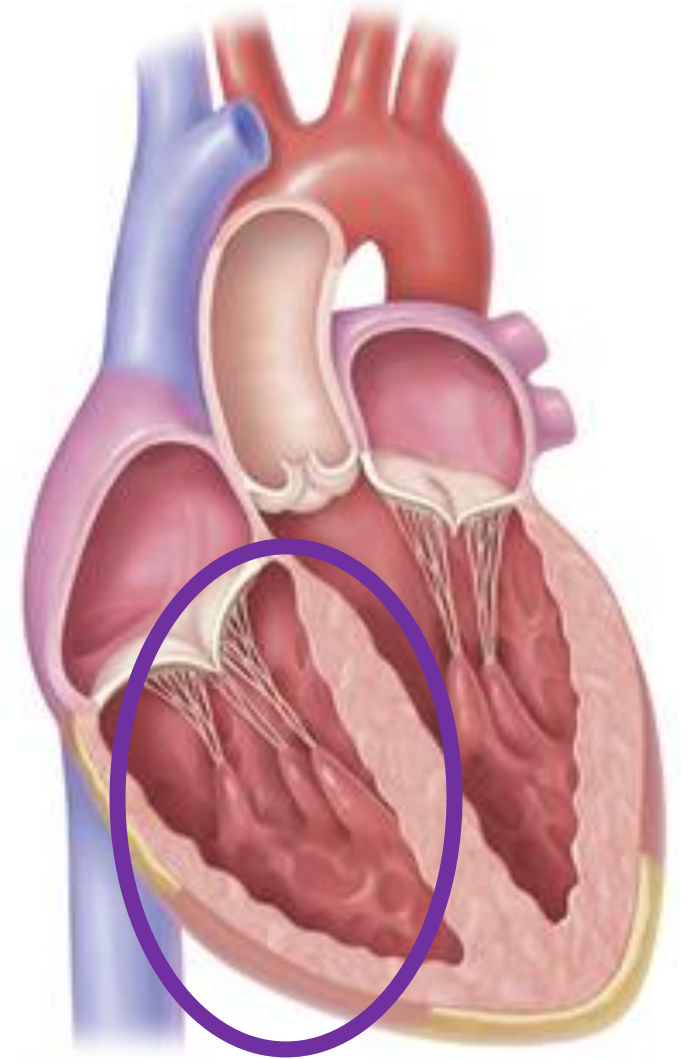
# Hart

- Rechter atrium
  - Veneuze return ↓
  - Preload ↓
  - Afterload ↑



# Hart

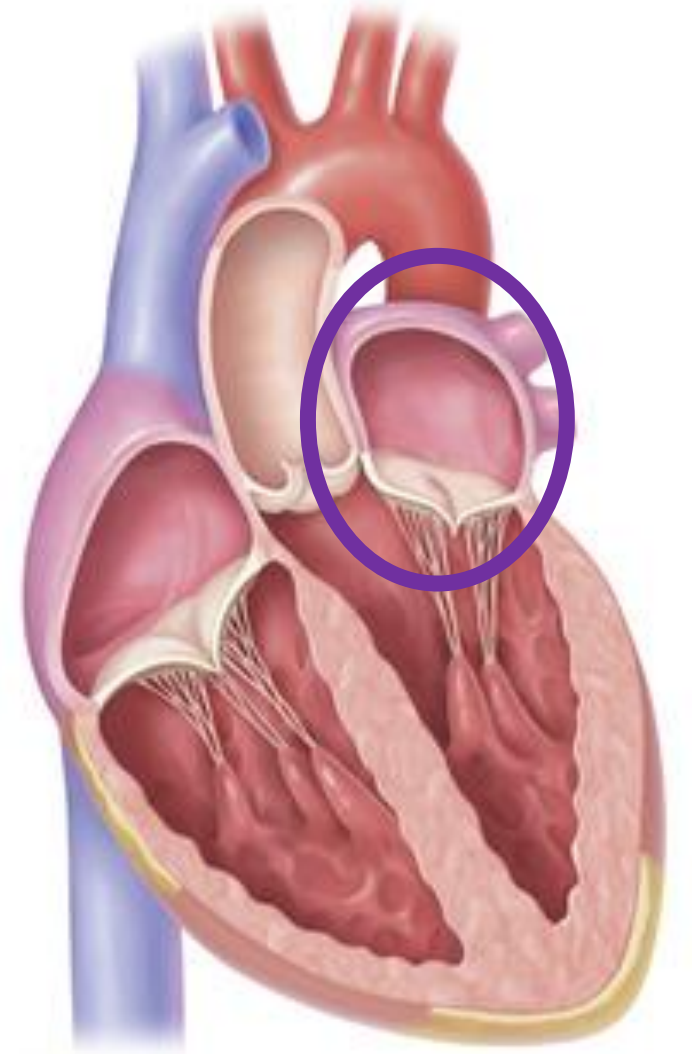
- Rechter ventrikel
  - Preload ↓
  - Afterload ↑
  - Slagvolume ↓
  - Hypoxische pulmonale vasoconstrictie





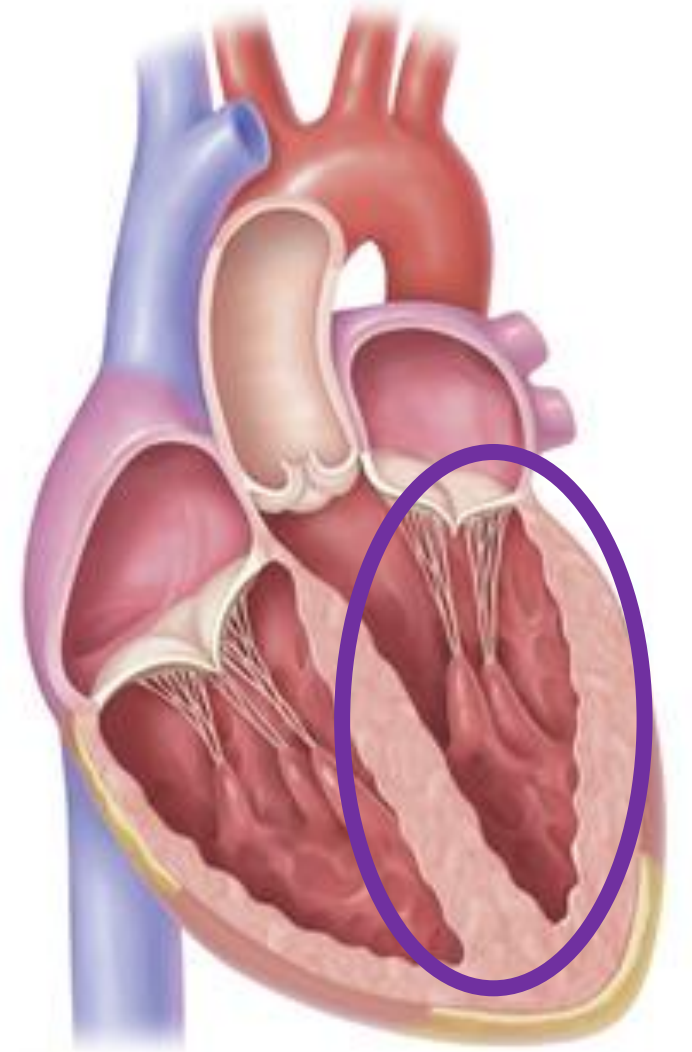
# Hart

- Linker atrium
  - Preload ↓



# Hart

- Linker ventrikel
  - Intrathoracale druk > pericard
  - Preload ↓
  - Ventriculaire onderlinge afhankelijkheid
  - Afterload ↓
  - C.O. ↓



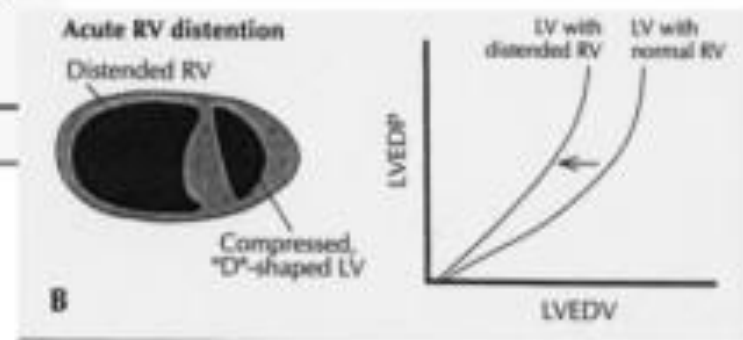
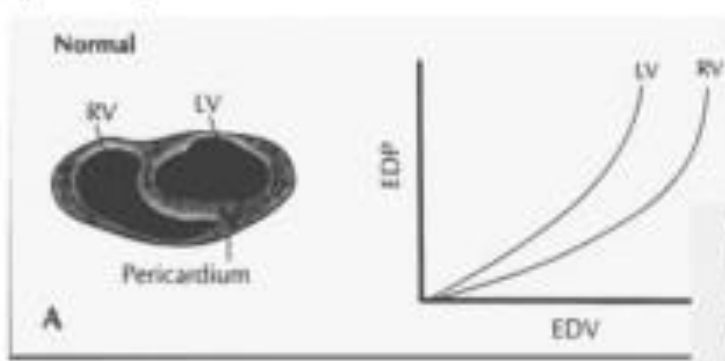
Systemic venous return ↓

RV inflow ↓

The two ventricles

Pulmonary venous return ↓

pump *in series*



Left ventricular filling ↓

LV compliance ↓

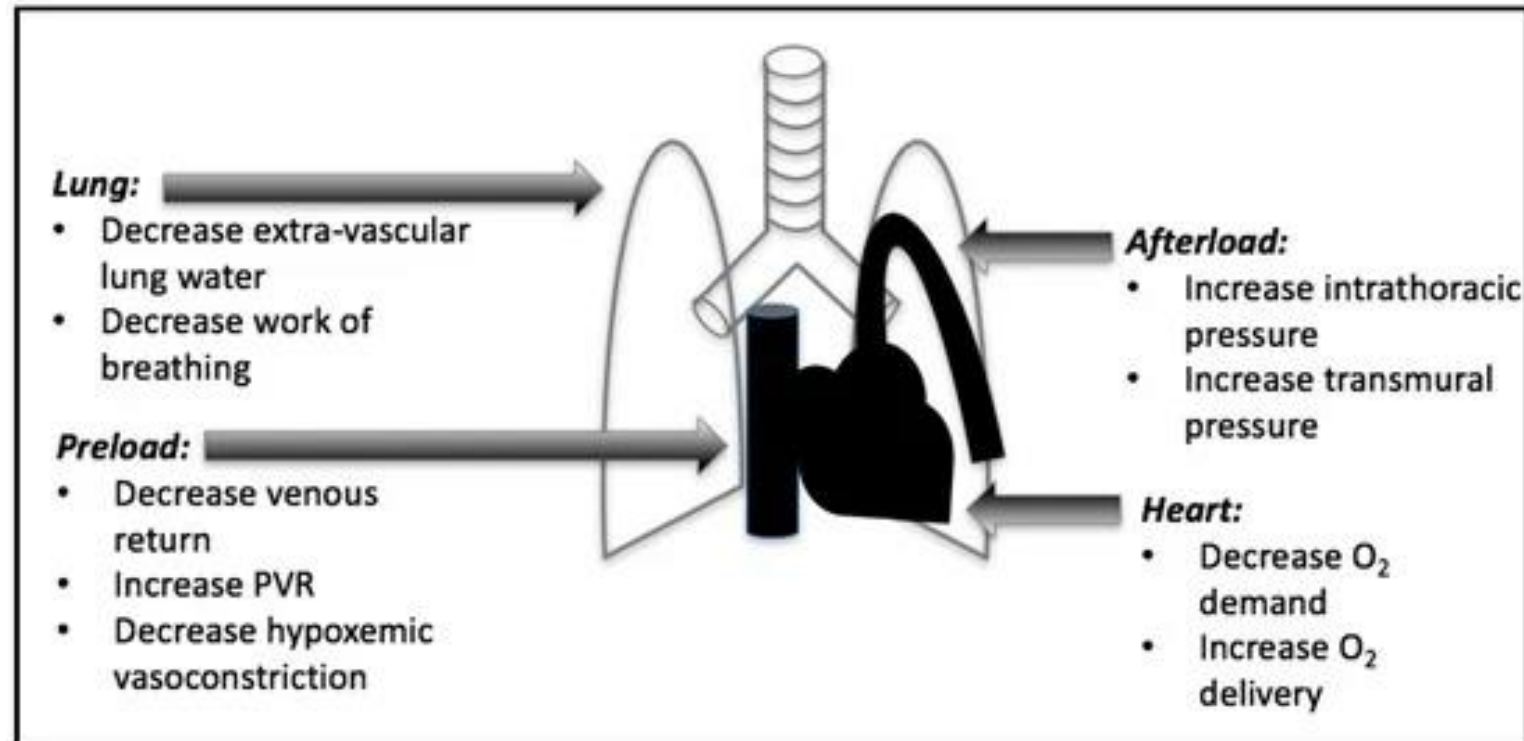
RV volume ↑

The two ventricles share common fibers, septum and a common pericardium:

*Ventricular interdependence*

# Hartfalen

- Voorzichtigheid geboden
- Mechanische beademing/NIV
- CPAP
- Weanen



# Prone



# Reanimatie

- Impedance Threshold Device - ResQPOD

[ResQPOD Impedance Threshold Device – YouTube](#)



# • Samenvattend •

- Effecten hart....
- Hartfalen patiënt
- Prone position
- ResQPOD



**Bedankt**